



**INSTRUMENTS, INC.**

468 Liberty Dr. TEL 715- 253 2801  
Wittenberg, WI, 54499, 715- 445 4946  
USA FAX 715- 253 2811

# IMC SOLAR EAGLE

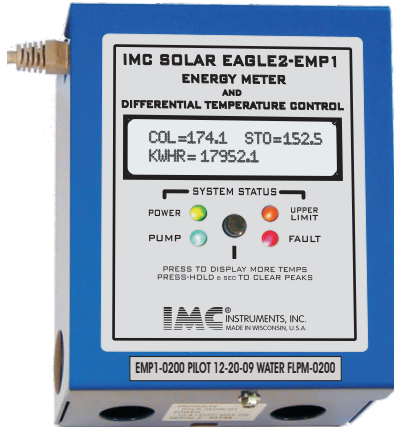
## IMC SOLAR ENERGY METER price LIST 02-05-2014

REV 1.7

### MODEL EMP# ENERGY METERS WITH BUILT IN DIFFERENTIAL CONTROLLER

### INTEGRATED FLOW METERS

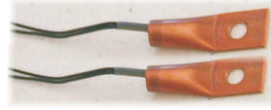
COMPLETE PACKAGE WITH FLOW METER, PRECISION BTU TEMPERATURE SENSORS, BOLT ON TEMPERATURE SENSORS, DIFFERENTIAL CONTROLLER AND BTU METER



FLOW CHAMBER TYPE: WOLTMANN TURBINE



FLOW CHAMBER TYPE: MULTI-JET



FOR SOLAR LOOP:  
BOLT ON TEMPERATURE SENSORS  
#SOLR-TS02 SENSOR BOLT-ON STYLE



PRECISION BTU MEASURING TEMPERATURE SENSORS (+/-0.2F)  
#SOLR-TS13-02 IMRS 2-SENSOR 1/4"NPT FTG 2.5"L  
#SOLR-TS23-02 IMRS 2-SENSOR 1/2"NPT FTG 2.5"L  
#SOLR-TS14-02 IMRS 2-SENSOR 1/4"NPT FTG 4"L  
#SOLR-TS24-02 IMRS 2-SENSOR 1/2"NPT FTG 4"L  
#SOLR-TS15-02 IMRS 2-SENSOR 1/4"NPT FTG 8"L  
#SOLR-TS25-02 IMRS 2-SENSOR 1/2"NPT FTG 8"L

"PRECISION GRADE- OIML R 75-1 COMPLIANT"

COMPLETE THERMAL ENERGY METERS / SOLAR DIFFERENTIAL CONTROLLERS PACKAGES

### MEDIUM TEMPERATURE 200 Deg F MAX

MODEL NO	FLOW METER	"LIST"
Model # EMP1-0050	size 1/2"	\$801.10
Model # EMP1-0075	size 3/4"	\$829.34
Model # EMP1-0100	size 1"	\$1177.94
Model # EMP1-0150	size 1-1/2"	\$1610.88
Model # EMP1-0200	size 2"	\$2742.35

### HIGH TEMPERATURE 250 Deg F MAX

MODEL NO	FLOW METER	"LIST"
Model # EMP2-0050	size 1/2"	\$1034.04
Model # EMP2-0075	size 3/4"	\$1062.28
Model # EMP1-0100	size 1"	\$1791.47
Model # EMP2-0150	size 1-1/2"	\$CALL
Model # EMP2-0200	size 2"	\$CALL
Model # EMP2-0300	size 3"	\$CALL
Model # EMP2-0400	size 4"	\$CALL

### LOW TEMPERATURE-POOL (W/CHLORINE) 125 Deg F MAX

MODEL NO	FLOW METER	"LIST"
Model # EMP2-0200	size 2"	\$CALL
Model # EMP2-0300	size 3"	\$CALL
Model # EMP2-0400	size 4"	\$CALL
Model # EMP2-0400	size 6"	\$CALL

ALL ENERGY METERS / CONTROLLERS ARE

# ETL LISTED

to **UL873** standards

and is

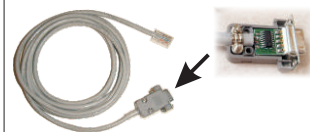
**OIML R 75-1 COMPLIANT**

**ACCESSORIES**

**PC INTERFACE**

#SOLR-DA10 PC DATA PORT ADAPTER NON-ISOL

\$70.00 LIST



**PC DATA-PORT ADAPTER for USB\*: SOLR-DA15**

USB direct connection to PC with 7" cable/RJ45 plug non isolated.  
 Drivers for Win XP, Vista & Win 7 are installed from a simple setup program.

\$75.00 LIST



**EXTENSION CABLES**

- #3079-5007 EXT CABLE CAT-5 7' LG \$7.50 LIST
- #3079-5014 EXT CABLE CAT-5 14' LG \$16.10 LIST
- #3079-5025 EXT CABLE CAT-5 25' LG \$26.90 LIST
- #3079-5100 EXT CABLE CAT-5 100' LG \$40.00 LIST
- #3081-0045 CONNECTOR CAT-5 COUPLER \$7.50 LIST

**FOR PRICING SEE QUANTITY DISCOUNT SCHEDULE**



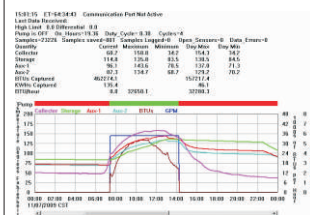
**DATA LOGGING AND CHARTING SOFTWARE**

#SOLR-TLOG

LOGGING/GRAPHING PC SOFTWARE

\$95.00 LIST

CALL FACTORY



**REMOTE DIGITAL DISPLAYS**

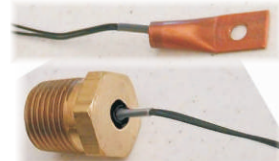
- #SOLR-RD80 REMOTE LCD DISPLAY 4x20 CHRS GRN
  - #SOLR-RD84 REMOTE LCD DISPLAY 4x20 CHRS BLU
  - #SOLR-RD84-BE REMOTE LCD DISPLAY 4x20 CHRS BWE
- \$132.00 LIST

**FOR PRICING SEE QUANTITY DISCOUNT SCHEDULE**



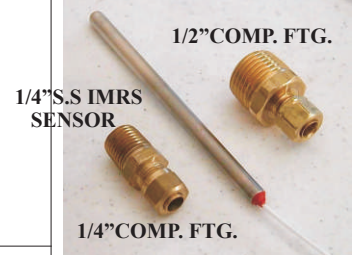
**10 K THERMISTORS - TEMPERATURE MEASUREMENT**

- #SOLR-TS02 SENSOR BOLT-ON STYLE \$34.00 LIST
- #SOLR-TS03 SENSOR 1/2" NPT HEX PLUG \$37.40 LIST



**IMMERSION SENSOR W/ COMPRESSION FTNGS**

- #SOLR-TS13 IMRS SENSOR 1/4"NPT FTG 2.5"L \$44.33 LIST
- #SOLR-TS23 IMRS SENSOR 1/2"NPT FTG 2.5"L \$47.27 LIST
- #SOLR-TS14 IMRS SENSOR 1/4"NPT FTG 4"L \$47.03 LIST
- #SOLR-TS24 IMRS SENSOR 1/2"NPT FTG 4"L \$49.30 LIST
- #SOLR-TS15 IMRS SENSOR 1/4"NPT FTG 8"L \$48.73 LIST
- #SOLR-TS25 IMRS SENSOR 1/2"NPT FTG 8"L \$50.67 LIST



**1/4" IMMERSION SENSOR W/OUT COMPRESSION FTNGS**

- #SOLR-TSN3 IMRS SENSOR W/O FTG 2.5L \$39.67 LIST
- #SOLR-TSN4 IMRS SENSOR W/O FTG 4"L \$41.37 LIST
- #SOLR-TSN5 IMRS SENSOR W/O FTG 8"L \$43.07 LIST



**1/4" DUAL IMMERSION SENSOR W/ COMPRESSION FTNGS**

- #SOLR-TS25-20 IMRS SENSOR 1/2"NPT FTG 8"L \$56.67 LIST



**6 MM IMMERSION SENSOR W/OUT COMPRESSION FTNGS**

- #SOLR-TSN3-6M IMRS SENSOR W/O FTG 2.5L \$44.20 LIST
- #SOLR-TSN4-6M IMRS SENSOR W/O FTG 4"L \$45.90 LIST
- #SOLR-TSN5-6M IMRS SENSOR W/O FTG 8"L \$47.60 LIST



All prices subject to change without notice

**ACCESSORIES cont**

**PRECISION MATCHED SENSOR PAIRS W/COMP FTNGS**

- #SOLR-TS13-02 IMRS 2-SENSOR 1/4"NPT FTG 2.5"L \$111.80 LIST
- #SOLR-TS23-02 IMRS 2-SENSOR 1/2"NPT FTG 2.5"L \$115.20 LIST
- #SOLR-TS14-02 IMRS 2-SENSOR 1/4"NPT FTG 4"L \$114.80 LIST
- #SOLR-TS24-02 IMRS 2-SENSOR 1/2"NPT FTG 4"L \$118.20 LIST
- #SOLR-TS15-02 IMRS 2-SENSOR 1/4"NPT FTG 8"L \$117.80 LIST
- #SOLR-TS25-02 IMRS 2-SENSOR 1/2"NPT FTG 8"L \$121.20 LIST

**PRECISION MATCHED SENSOR PAIRS W/OUT COMP FTNGS**

- #SOLR-TSN3-02 IMRS 2-SENSOR W/O FTG 2.5"L \$104.80 LIST
- #SOLR-TSN4-02 IMRS 2-SENSOR W/O FTG 4"L \$107.80 LIST
- #SOLR-TSN5-02 IMRS 2-SENSOR W/O FTG 8"L \$110.80 LIST

- #2202-0404 COMP FTG, BRS .25 DIAx 1/4"NPT \$5.50 LIST
- #2202-0408 COMP FTG, BRS .25 DIAx 1/2"NPT \$6.95 LIST

- 1770-0104 TMWELLSS#304 2.6L 1/2Mx 1/4F-NPT \$49 LIST

- AC ADAPTERS** Includes qty(2) , 8 amp DIODES
- #7750-0012 - used as PV power backup  
 PWR SUPPLY 18W 12VDC at 2.5 amps \$53.33 LIST
  - #7087-0013 - used as bat.charger and power back up  
 BATTERY CHRGR 13.5VDC at 1.5 amps \$53.33 LIST

**BACNET IP INTERFACE**

**MODEL # 460 BSAIMC** Complete Ethernet based Bacnet interface for connecting Building Automation Systems to the SERIAL DATA port of the EAGLE controllers.

**CALL FACTORY \$1220.00 NET**

**DATA RECORDER**

**MODEL # SOLR-SD20** For recording the SERIAL out put of the EAGLE controllers in TEXT format. Includes 4Gb SD card ( 2 years of logging ) with 3 foot extension \$215 LIST

**MODEL # SOLR-SD20-IP** For recording the SERIAL out put of ISOLATED EAGLE controllers in TEXT format. Includes 4Gb SD card (2 years of logging) with 3 foot extension and AC ADAPTER for line operation \$225 LIST

All prices subject to change without notice



**FOR PRICING SEE QUANTITY DISCOUNT SCHEDULE**



**ACCESSORIES cont**

**SIX THERMISTOR SELECTOR BOX**

**MODEL #SOLR-0076 -Selects 1 of six thermistor sensors for monitoring by the Eagle Controller**

**\$200.00 LIST**

**FOR  
PRICING  
SEE  
QUANTITY  
DISCOUNT  
SCHEDULE**



**DATA PORT SPLITTER-**

**MODEL # SOLR-DA21 -Allows connection of two devices to the Eagle Controller SERIAL DATA PORT**

**\$ 66.67 LIST**



**FLOW METER CABLE EXTENSION 3.5 MM PREMIUM M/F**

**MODEL #3079-025 25 feet extension \$30.00 LIST**

**MODEL #3079-050 50 feet extension \$45.00 LIST**

**MODEL #3079-100 100 feet extension \$70.00 LIST**



All prices subject to change without notice